

Accommodation Rates - **Beach-Facing** - Financial Year 2010 - 2011

No.	v-3	Full Sea View	Low Season 13-Jan 28-Feb 2010 Low*	Low Season 01-Mar 25-Mar 2010 Low*	School Holiday 26-Mar 11-Apr 2010	Low Season 12-Apr 30-May 2010 Low*	School Holiday 01-Jun 15-Jul 2010 World Cup	Low Season 16-Jul 23-Sep 2010 Low*	School Holiday 24-Sep 03-Oct 2010	Low Season 04-Oct 03-Dec 2010 Low*	X/Mas 2010 04-Dec 15-Dec 2010	X/Mas 2010 16-Dec 12-Jan 2011	Low Season 13-Jan 28-Feb 2011 Low*
Ground / Beach Accommodation													
10	3 Bedroom/3Bathroom-6 sleeper	✓	1 550	1 700	2 350	1 700	2 350	1 700	2 350	1 700	3 200	4 200	1 700
11	3 Bedroom/3Bathroom-6 sleeper	✓	1 550	1 700	2 350	1 700	2 350	1 700	2 350	1 700	3 200	4 200	1 700
2nd Floor / Beach Accommodation													
21	3 Bedroom/3Bathroom-6 sleeper	✓	1 550	1 700	2 350	1 700	2 350	1 700	2 350	1 700	3 200	4 200	1 700
22	2 Bedroom/2Bath 4 sleeper-Garden	Ltd	1 200	1 300	1 600	1 300	1 600	1 300	1 600	1 300	2 500	2 600	1 300
3rd Floor / Beach Accommodation													
30	2 Bedroom/2Bathroom-6 sleeper	✓	1 145	1 300	1 900	1 300	1 900	1 300	1 900	1 300	2 900	3 200	1 300
31	2 Bedroom/2Bathroom-6 sleeper	✓	1 145	1 300	1 900	1 300	1 900	1 300	1 900	1 300	2 900	3 200	1 300
4th Floor / Beach Accommodation													
40	2 Bedroom/2Bathroom-6 sleeper	✓	1 145	1 300	1 900	1 300	1 900	1 300	1 900	1 300	2 900	3 200	1 300
41	2 Bedroom/2Bathroom-6 sleeper	✓	1 470	1 600	2 300	1 600	2 300	1 600	2 300	1 600	3 100	3 500	1 600
42	2 Bedroom/2Bathroom-4 sleeper	✓	1 255	1 400	1 700	1 400	1 700	1 400	1 700	1 400	2 500	2 700	1 400
5th Floor / Beach Accommodation													
50	2 Bedroom/2Bathroom-6 sleeper	✓	1 145	1 300	1 900	1 300	1 900	1 300	1 900	1 300	2 900	3 200	1 300
51	2 Bedroom/2Bathroom-6 sleeper	✓	1 470	1 600	2 300	1 600	2 300	1 600	2 300	1 600	3 100	3 500	1 600
52	2 Bedroom/2Bathroom-4 sleeper	✓	1 255	1 400	1 700	1 400	1 700	1 400	1 700	1 400	2 500	2 700	1 400
6th Floor/ Beach Accommodation													
60	2 Bedroom/2Bathroom-6 sleeper	✓	1 470	1 600	2 300	1 600	2 300	1 600	2 300	1 600	3 100	3 500	1 600
61	2 Bedroom/2Bathroom-6 sleeper	✓	1 470	1 600	2 300	1 600	2 300	1 600	2 300	1 600	3 100	3 500	1 600
62	2 Bedroom/2Bathroom-4 sleeper	✓	1 255	1 400	1 700	1 400	1 700	1 400	1 700	1 400	2 500	2 700	1 400

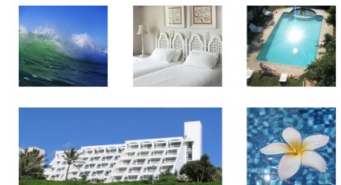
- All Prices are in ZAR (Including VAT)
- One night stay - R70.00 linen surcharge per flat
- Above rates are "per flat"
- Extra guests @ R170.00p/p low season /R220.00p/p in School Holiday/Xmas Season
- 6 Sleeper = Max 8 People & 4 Sleeper = Max 5 People
- Undercover parking at extra cost - 2 bays avail

• ELEGANT - Newly renovated apartment

Tel: +27 31-575-9850

admin@fleetwoodonsea.co.za

www.fleetwoodonsea.co.za





Accommodation Rates - South Wing - Financial Year 2010 - 2011

No.		Sea View	Low	Low	School	Low	School	Low	School	Low	X/Mas	X/Mas	Low
			Season 13-Jan 28-Feb 2010 Low*	Season 01-Mar 25-Mar 2010 Low*	Holiday 26-Mar 11-Apr 2010	Season 12-Apr 30-May 2010 Low*	Holiday 01-Jun 15-Jul 2010 World Cup	Season 16-Jul 23-Sep 2010 Low*	Holiday 24-Sep 03-Oct 2010	Season 04-Oct 03-Dec 2010 Low*	2010 04-Dec 15-Dec 2010	2010 16-Dec 12-Jan 2011	Season 13-Jan 28-Feb 2011 Low*
5th Floor / Standard Accommodation													
53	Std - 1 Bedroom - facing Umhlanga Sands	Ltd	R 640	R 700	R 800	R 700	R 800	R 700	R 800	R 700	R 850	R 850	R 700
54	Std - 1 Bedroom - facing Umhlanga Sands	Ltd	R 640	R 700	R 800	R 700	R 800	R 700	R 800	R 700	R 850	R 850	R 700
55	Std - 2 Bedroom - facing Umhlanga Sands	Ltd	R 710	R 800	R 1 300	R 800	R 1 300	R 800	R 1 300	R 800	R 1 300	R 1 300	R 800
6th Floor / Standard Accommodation													
63	Std - Bachelor-facing Umhlanga Sands	Ltd	R 500	R 550	R 600	R 550	R 600	R 550	R 600	R 550	R 600	R 600	R 550
64	Std - 1 Bedroom-facing Umhlanga Sands	Ltd	R 640	R 700	R 800	R 700	R 800	R 700	R 800	R 700	R 850	R 850	R 700
65	Std - 2 bedroom-facing Umhlanga Sands	Ltd	R 710	R 800	R 1 300	R 800	R 1 300	R 800	R 1 300	R 800	R 1 300	R 1 300	R 800

- All Prices are in ZAR (Including VAT)
- One night stay - R70.00 linen surcharge per flat
- Above rates are "per flat "
- Extra guests @ R170.00p/p low season /R220.00p/p in School Holiday/Xmas Season
- 1 bedroom-maximum 2people; 2 bedroom-maximum 4 people

Tel: +27 31-575-9850
admin@fleetwoodonsea.co.za
www.fleetwoodonsea.co.za

